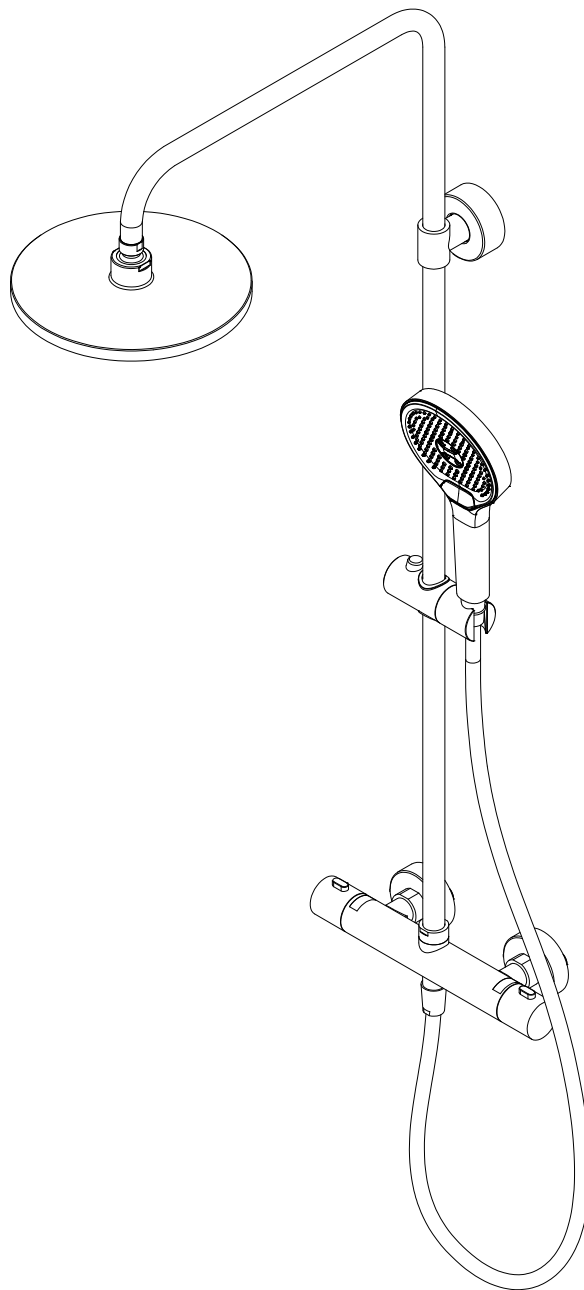
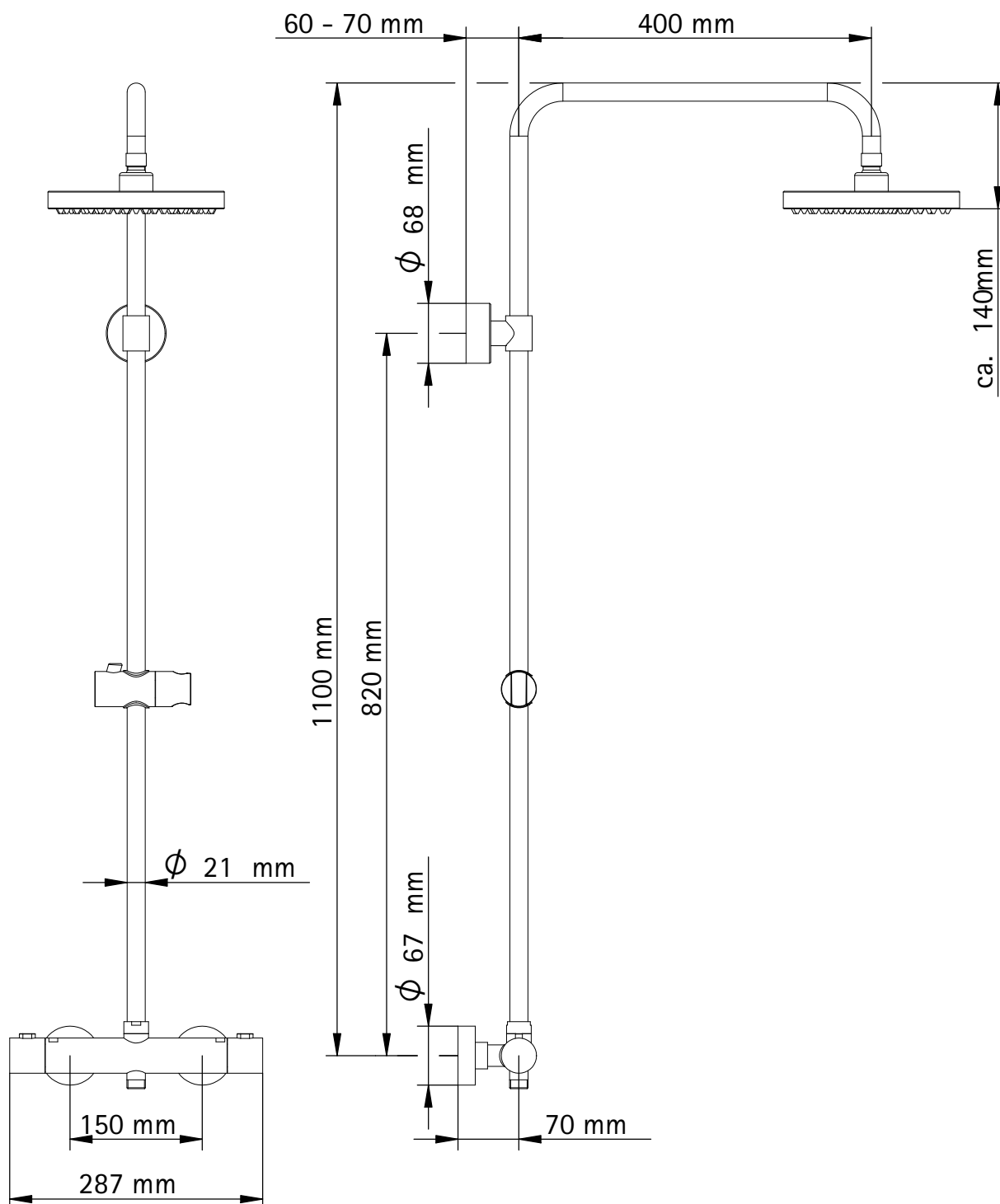


Montageanleitung Installation instructions Instructions de montage Montagehandleiding

Typ 5802, 5803



Maßzeichnung, dimensional drawing, dimensions, maatekening



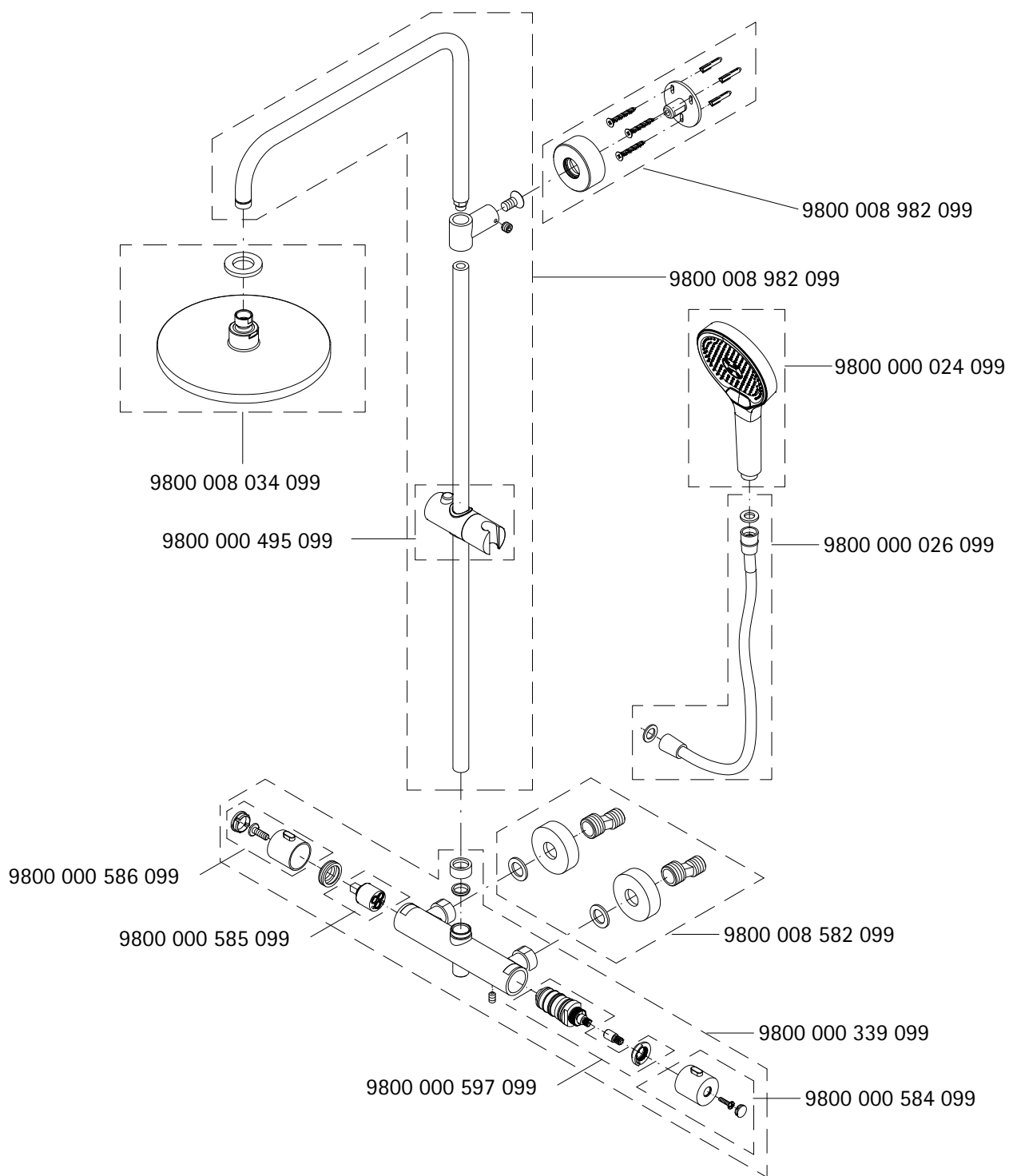
Info

de Alle Maßangaben unterliegen einer Toleranz von ± 5 mm
Maße teilweise abhängig von der Position der S-Anschlüsse und können fertigungsbedingt geringfügig variieren.

en All dimensions are subject to a tolerance of ± 5 mm
Dimensions partly depend on the position of the S-connectors and because of manufacturing reasons, may vary slightly.

fr Toutes les mesures sont soumises à une tolérance de ± 5 mm
La dimension dépend de la position des raccords excentriques en S et peut légèrement varier lors de la fabrication.

nl Leder maatopgaaf heeft een tolerantie van ± 5 mm. Maten gedeeltelijk afhankelijk van de positie van de S-koppelingen en kunnen in verband met de productievariatie minimaal variëren.



Info

de

Bei der Ersatzteilbestellung bitte unbedingt die entsprechende Artikelnummer vom Kaufbeleg angeben.

en

When ordering spare parts, please specify the item on the order from.

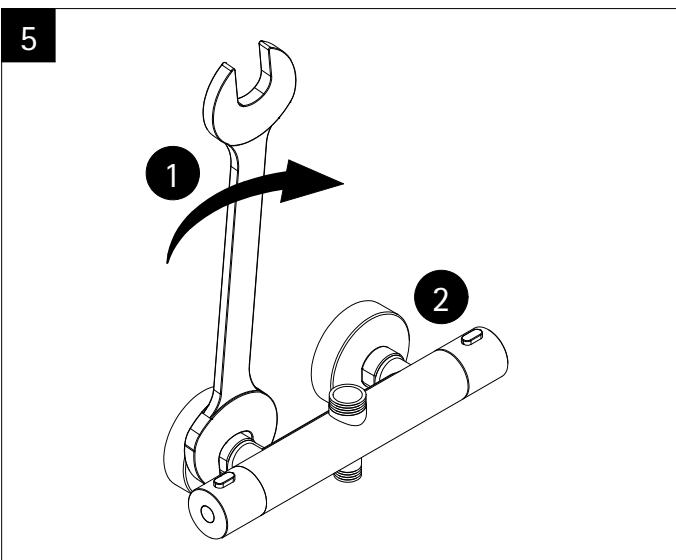
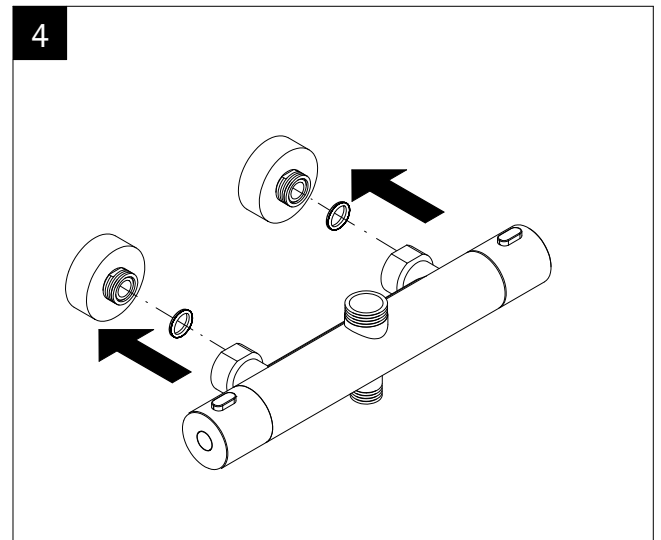
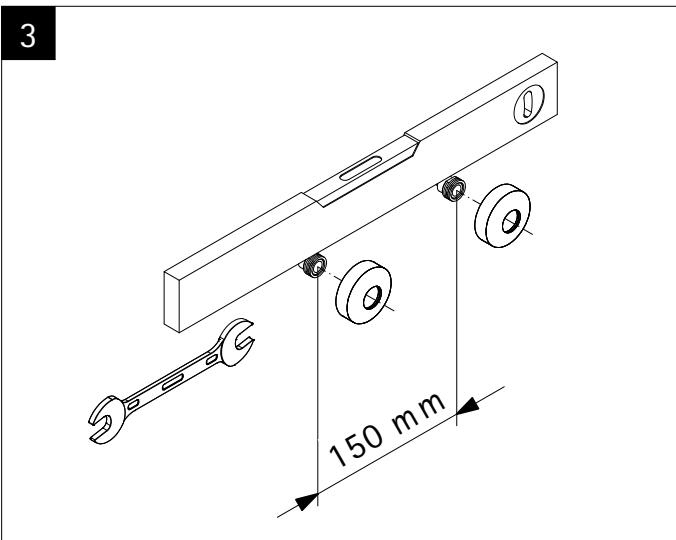
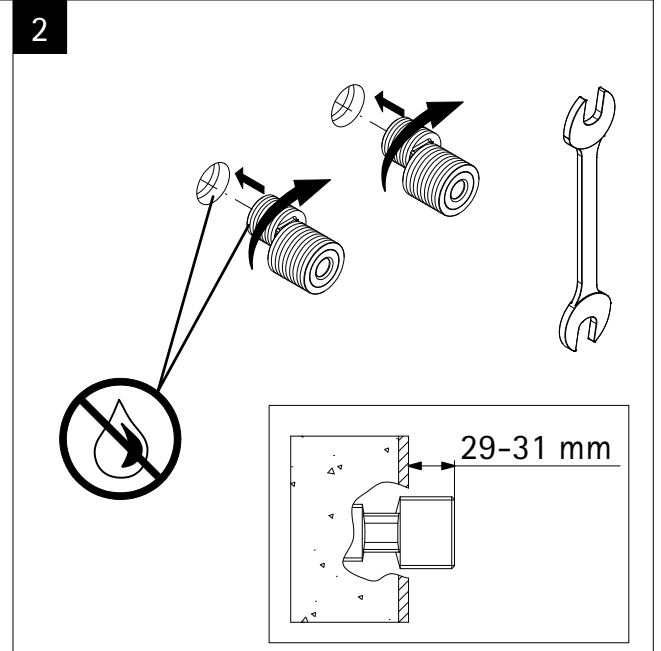
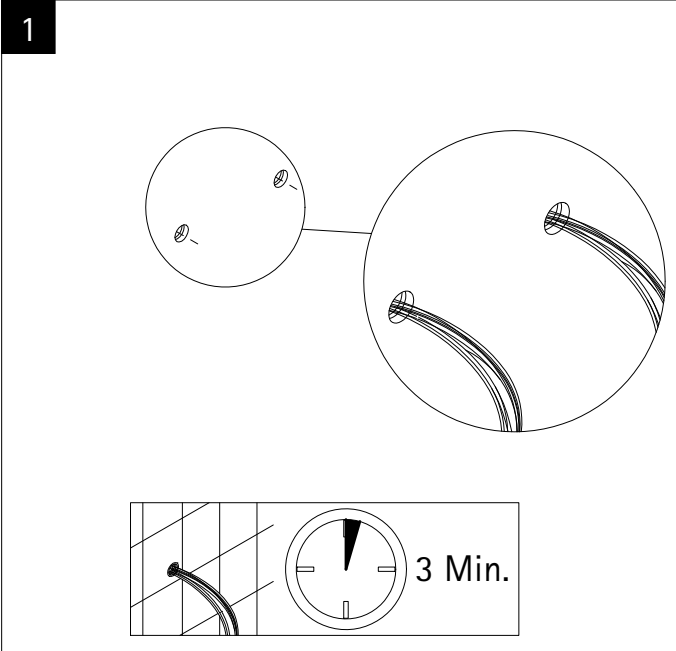
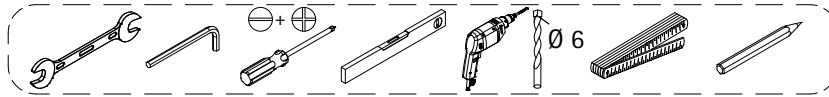
fr

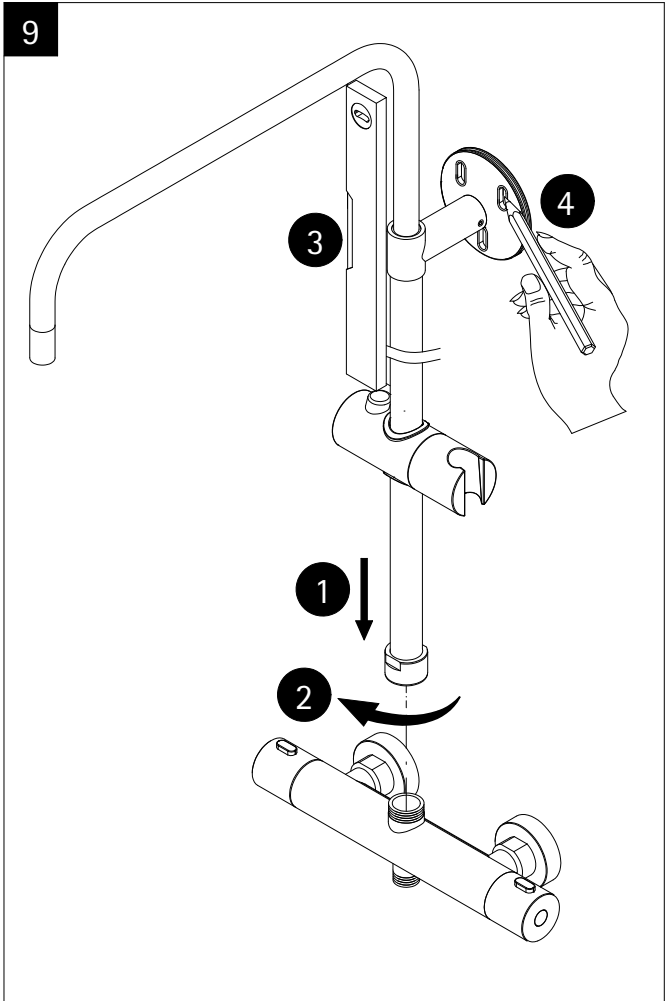
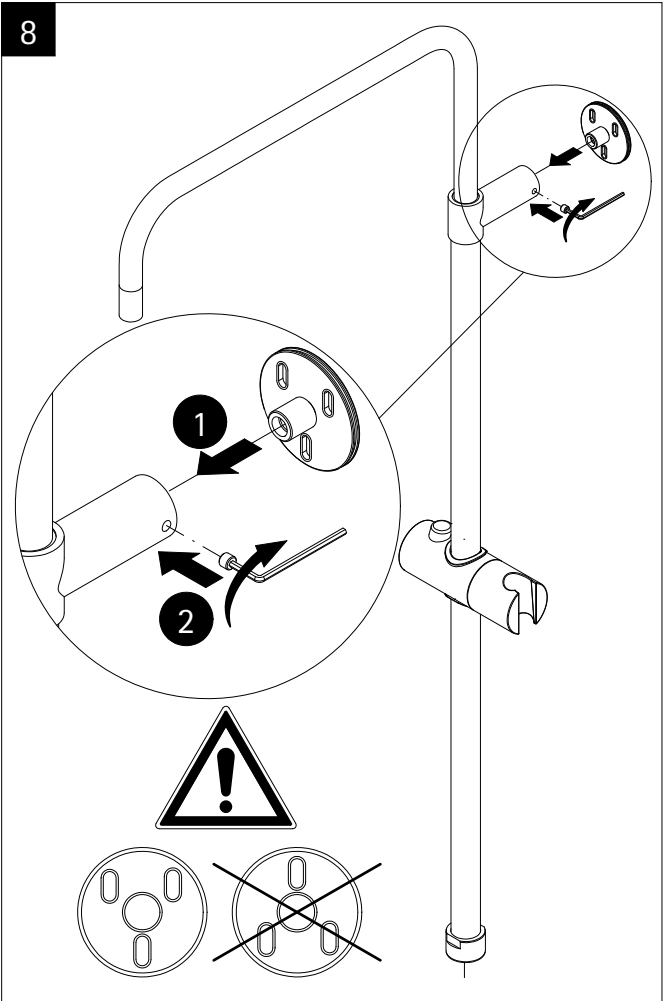
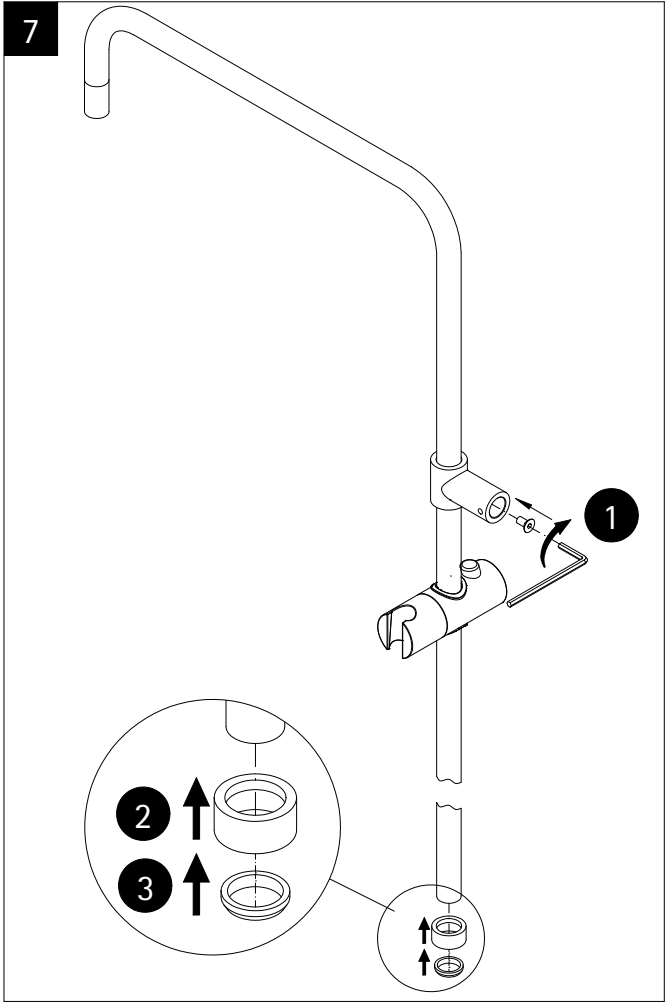
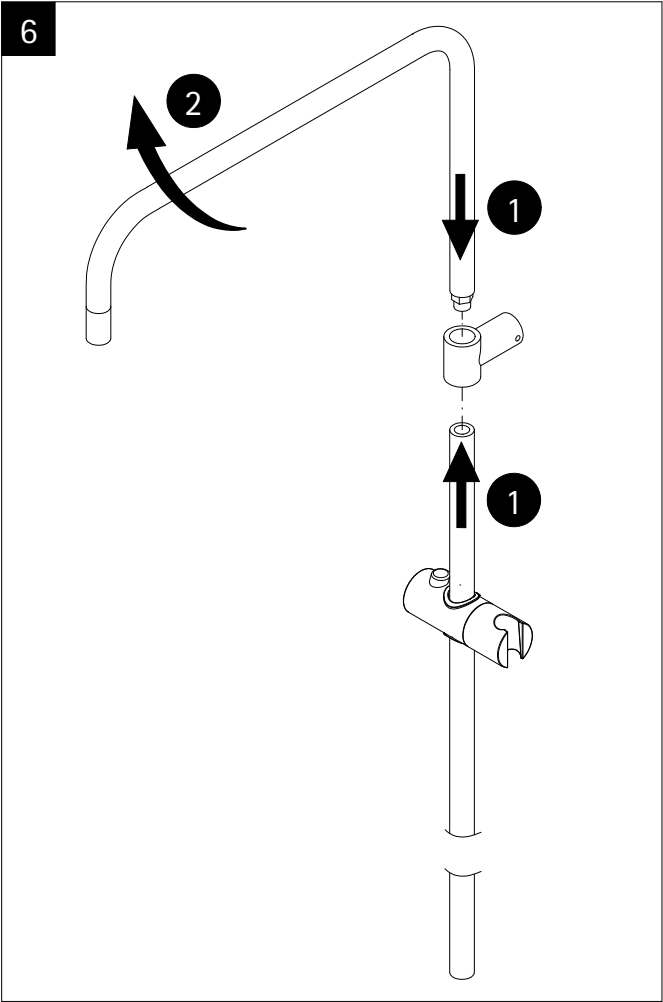
Lors de la commande des pièces détachées veuillez donner le numéro d'article conforme au bon d'achat.

nl

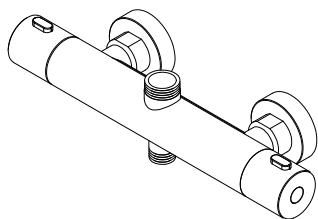
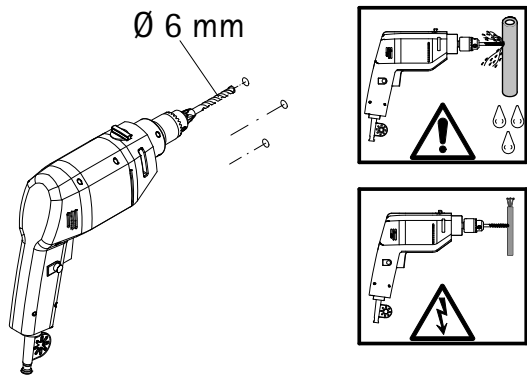
Bij de onderdelenbestelling graag in elk geval het passende artikelnummer van het koopbewijs aangeven.

Benötigtes Werkzeug, Tools required, Outils nécessaires, Benodigd gereedschap

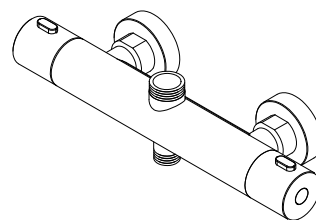
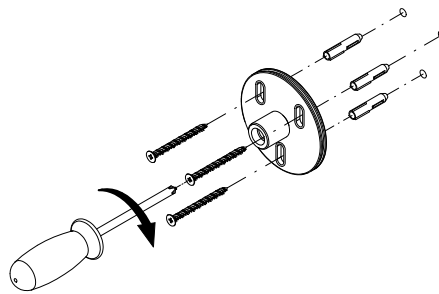




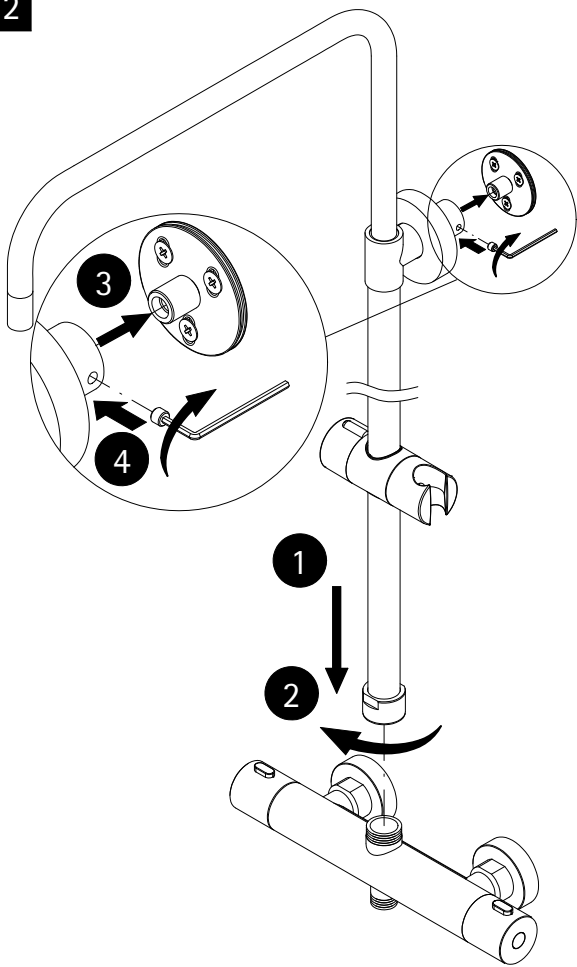
10



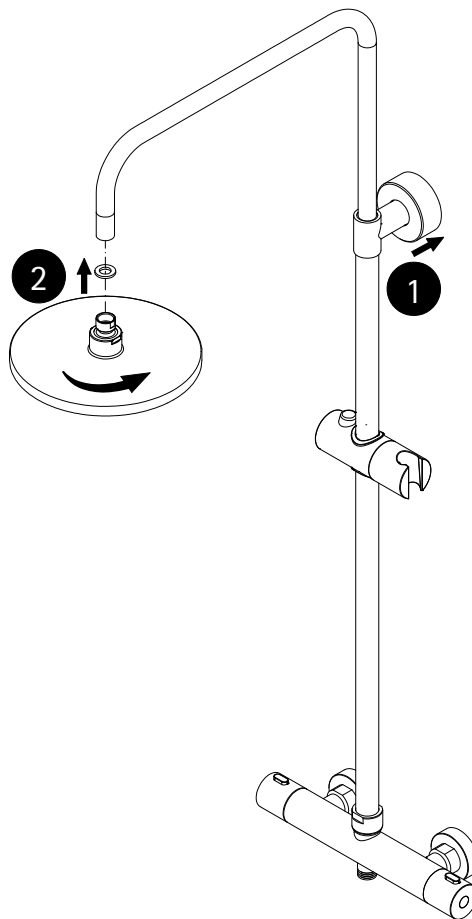
11



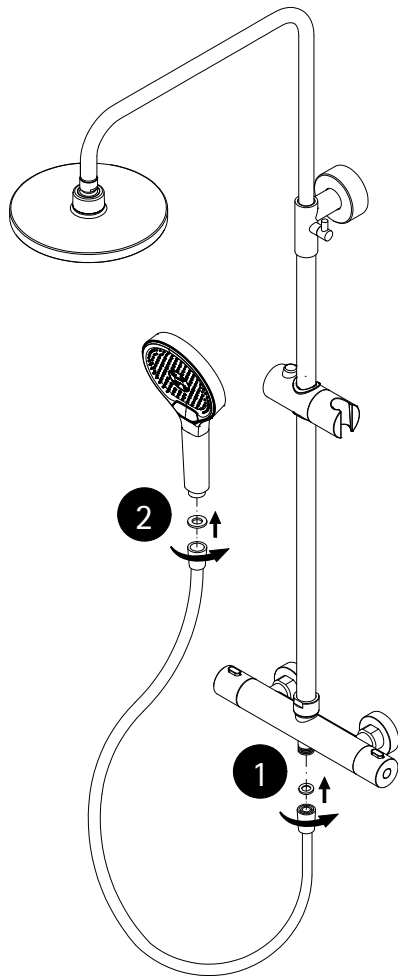
12



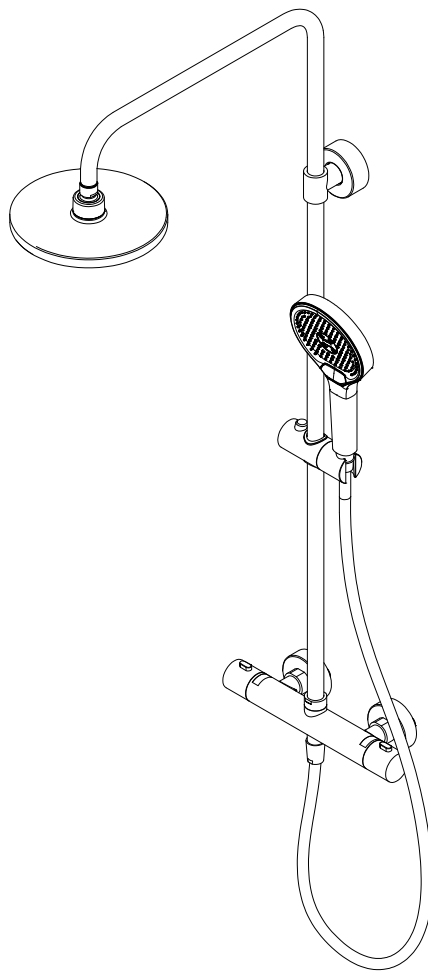
13



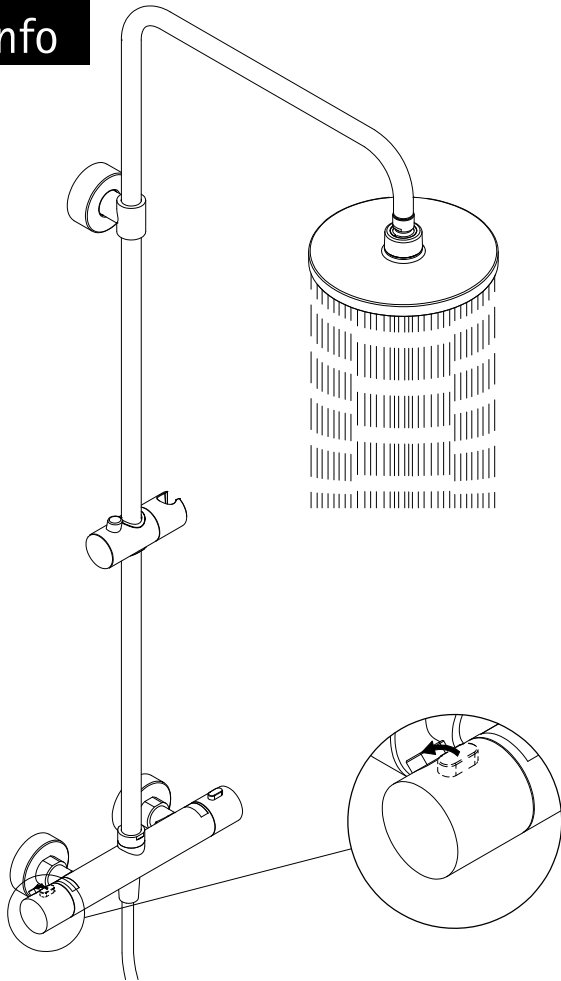
14



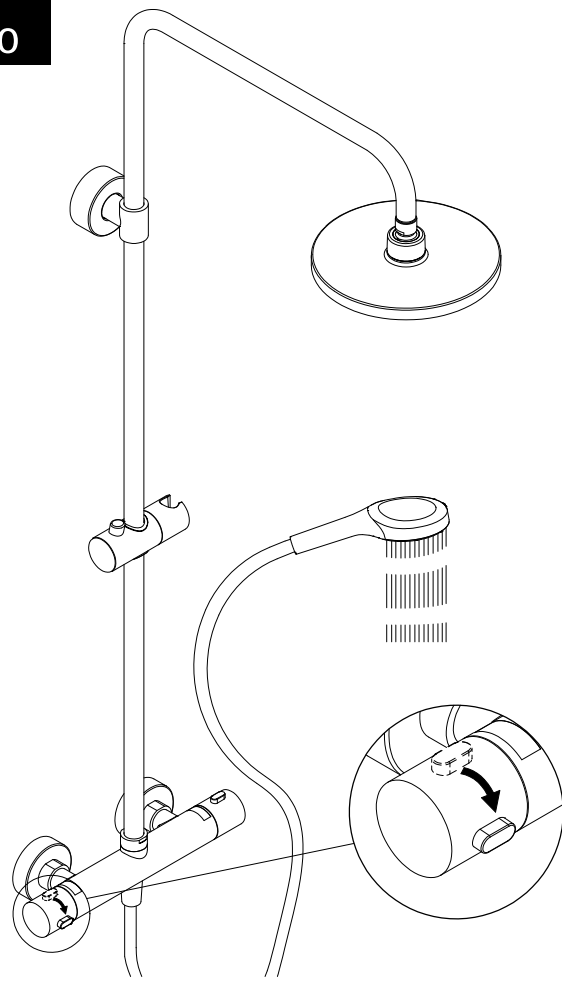
15



Info



Info



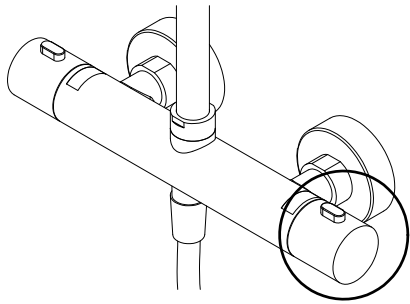
Info

de kalt ❄️ / warm ☀️

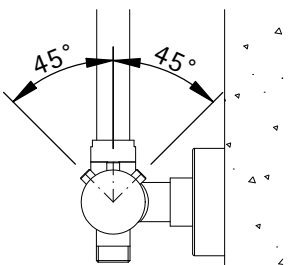
en cold ❄️ / hot ☀️

fr froid ❄️ / chaud ☀️

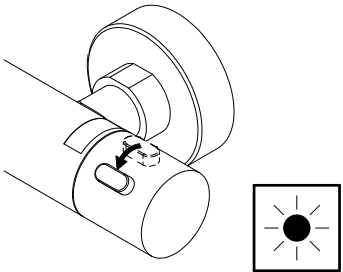
nl koud ❄️ / warm ☀️



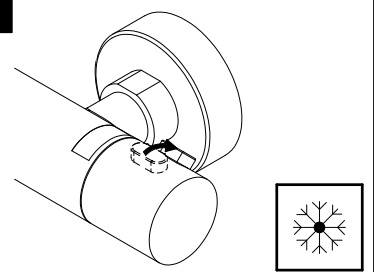
Info



1



2



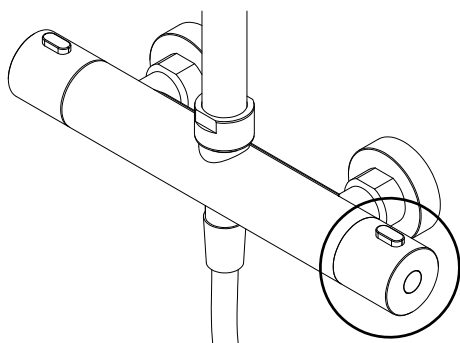
Info

de Temperatureinstellung.

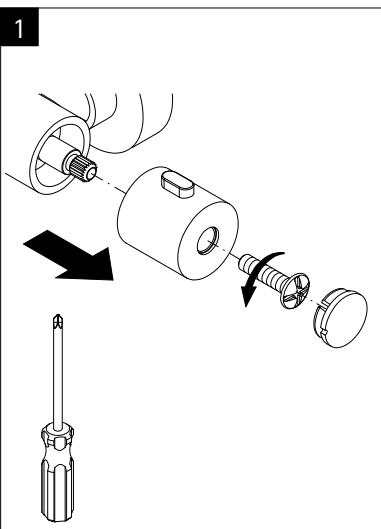
en temperature adjustment.

fr réglage de la température

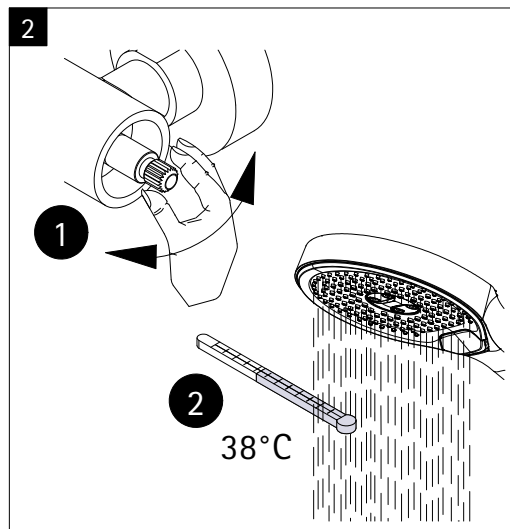
nl temperatuurinstelling.



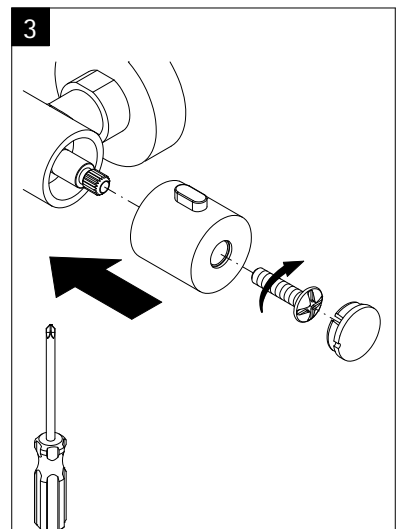
1



2



3



Info

de

Thermostatkartusche wechseln.
Wasser abstellen!

en

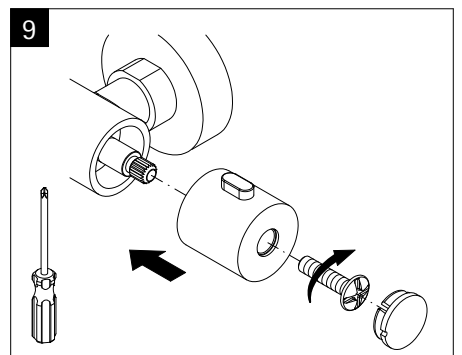
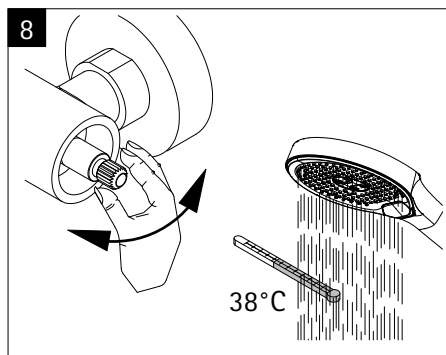
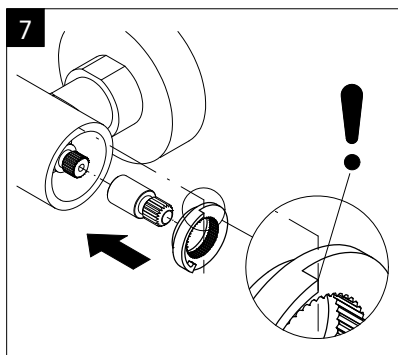
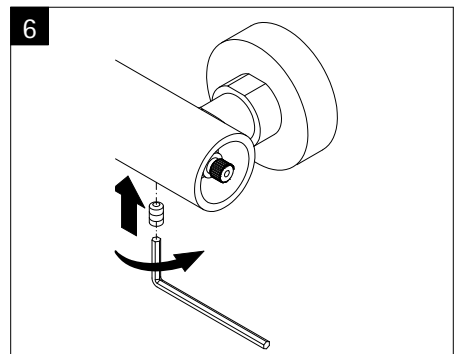
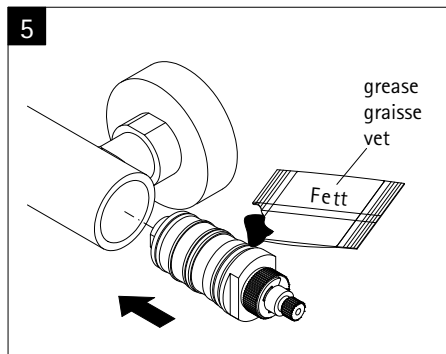
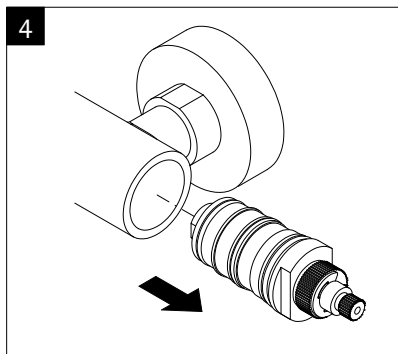
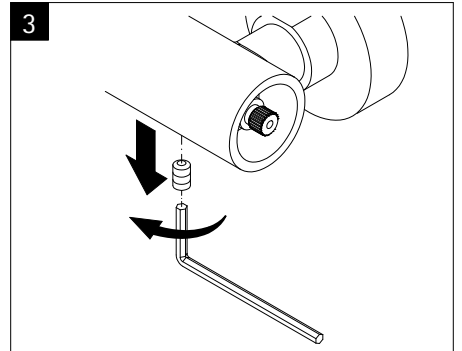
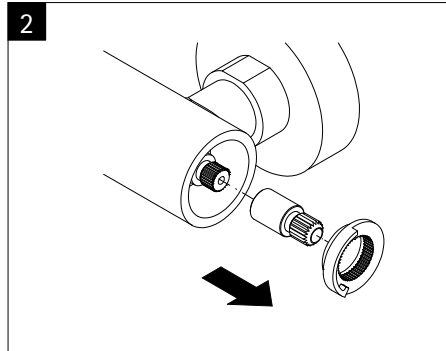
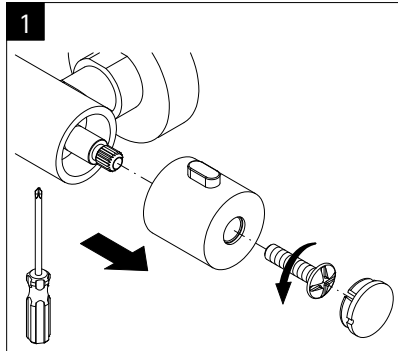
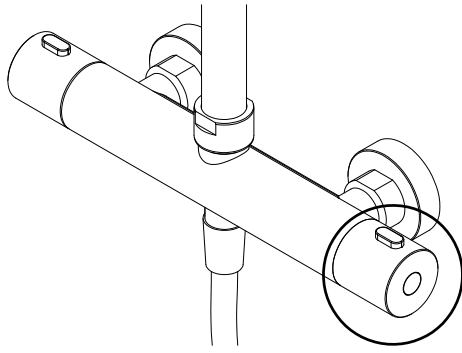
change the thermostat cartridge.
turn off the water!

fr

changez la cartouche du thermostat.
couper l'arrivée d'eau!

nl

eenhendelmenkraan wisselen.
water afsluiten!



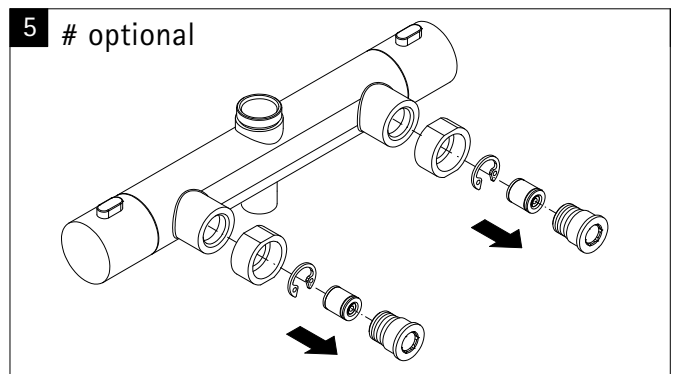
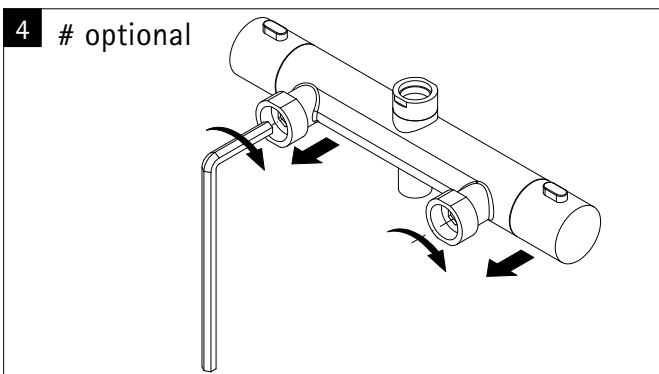
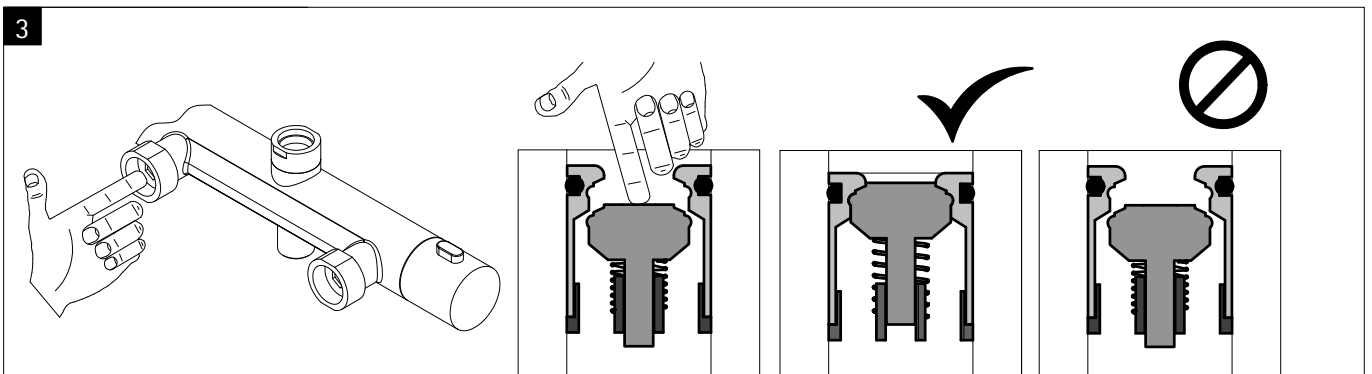
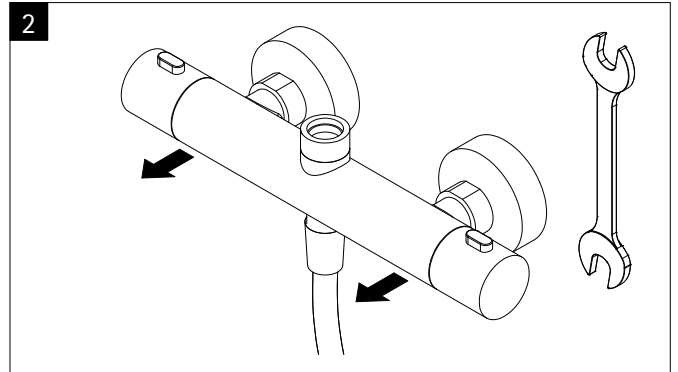
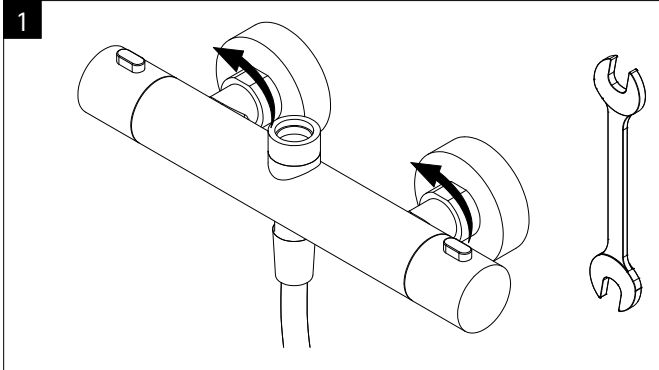
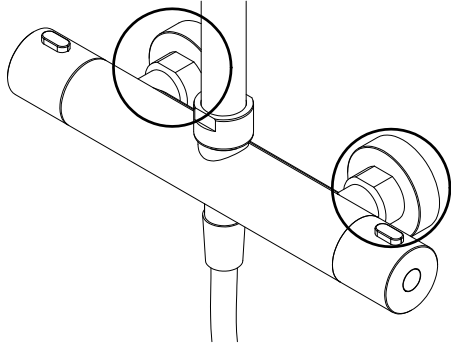
Info

de Rückflussverhinderer wechseln.
Wasser abstellen!

en non-return valve maintenance.
turn of the water!

fr Entretien du clapet anti-retour.
couper l'arrivée d'eau!

nl terugslagklep onderhoud.
water afsluiten!



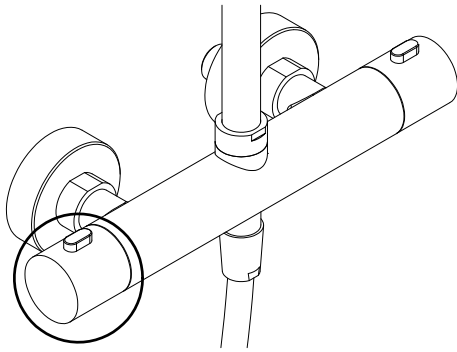
Info

de Einbau in umgekehrter Reihenfolge.

en Installation in the reverse order.

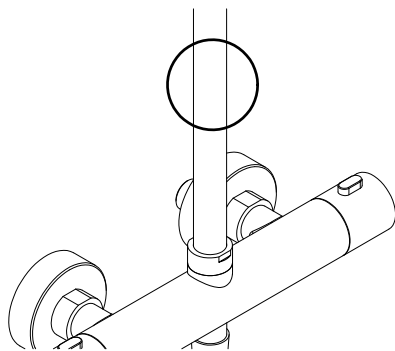
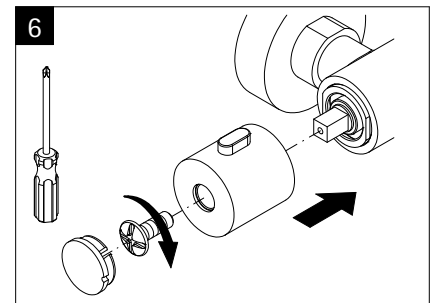
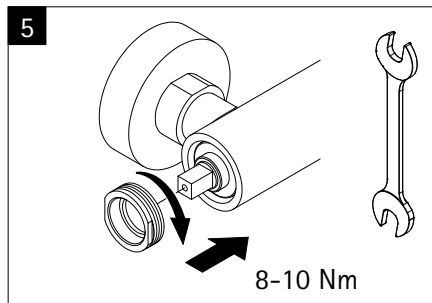
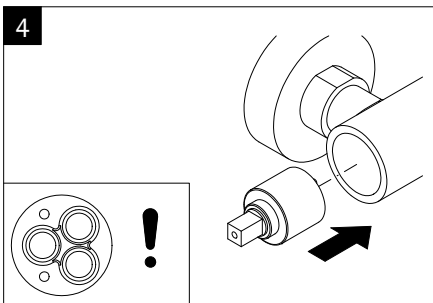
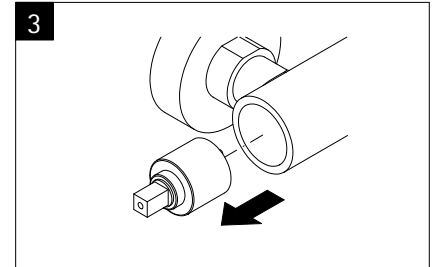
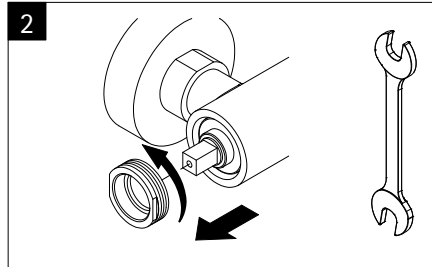
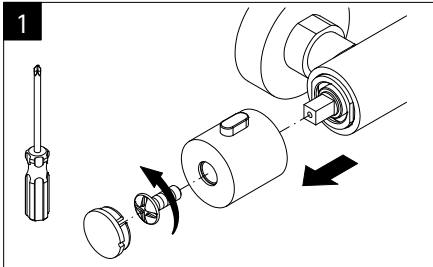
fr Montage dans le sense inverse.

nl Inbouw in omgekeerde volgorde.



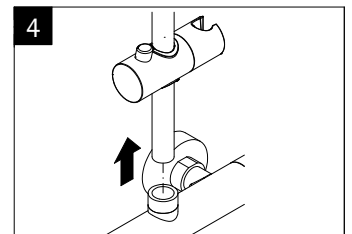
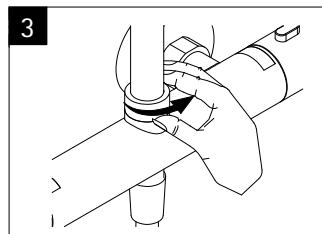
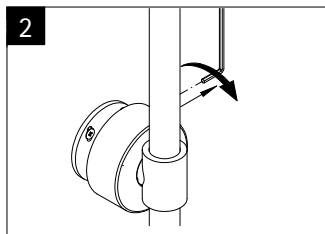
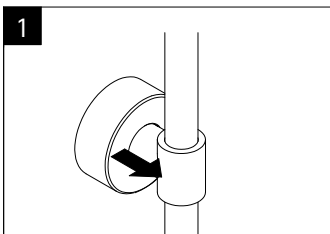
Info

- de** Umsteller wechsln.
Wasser abstellen!
- en** change the diverter.
turn of the water!
- fr** changez l'inverseur.
couper l'arrivée d'eau!
- nl** de omstelling wisselen.
water afsluiten!



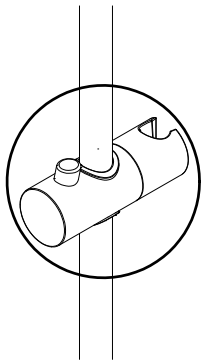
Info

- de** Rohre austauschen
Wasser abstellen!
- en** exchange tubes
turn of the water!
- fr** remplacer les tuyau.
couper l'arrivée d'eau!
- nl** leidingen vervangen
water afsluiten!



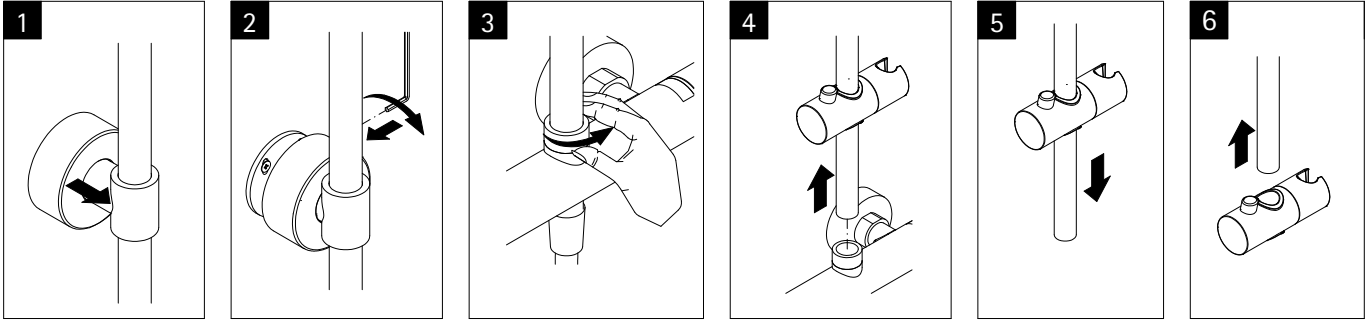
Info

- de** Einbau in umgekehrter Reihenfolge.
- en** Installation in the reverse order.
- fr** Montage dans le sense inverse.
- nl** Inbouw in omgekeerde volgorde.



Info

- de** Gleiter wechseln.
Wasser abstellen!
- en** Glider change.
turn of the water!
- fr** changement de planer.
couper l'arrivée d'eau!
- nl** Glijder wisselgeld.
water afsluiten!

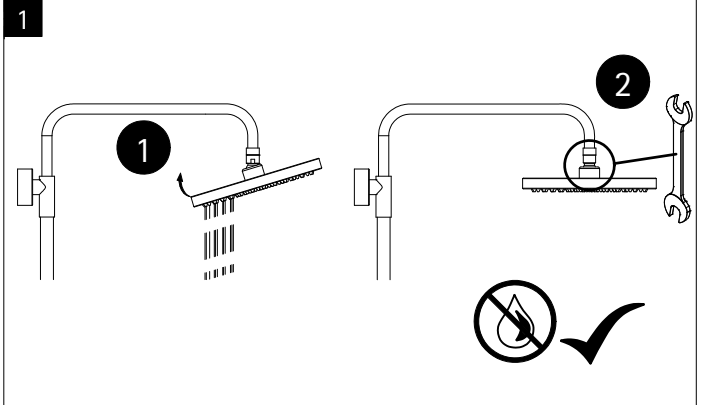


Info

- de** Einbau in umgekehrter Reihenfolge.
- en** Installation in the reverse order.
- fr** Montage dans le sense inverse.
- nl** Inbouw in omgekeerde volgorde.

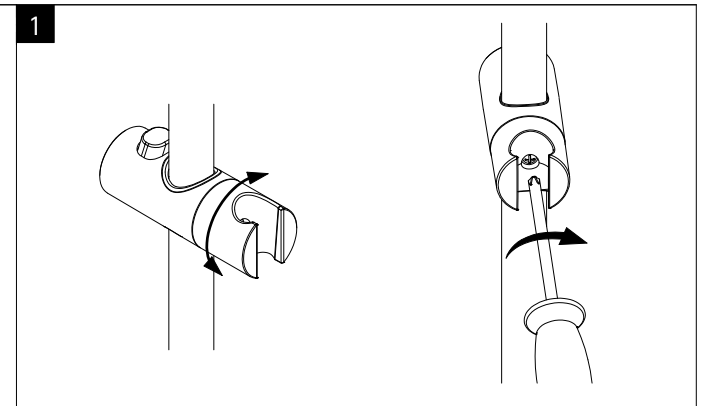
Info

- de** Tropfende Brausen: Hand- und Kopfbrause
- en** dripping head or hand shower
- fr** pommeau haut ou dochette à main goutent
- nl** druipende dochekop of handdoche

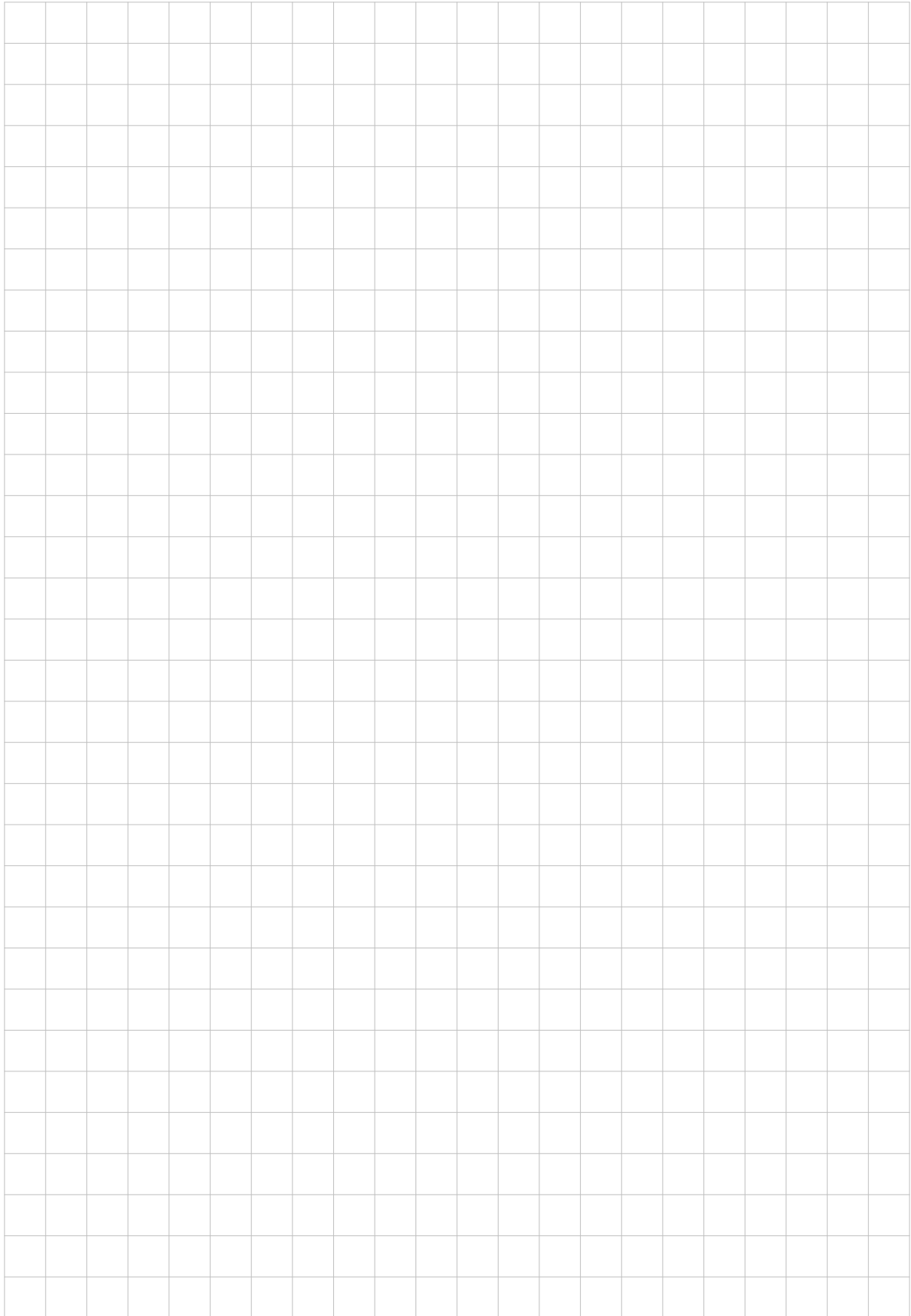


Info

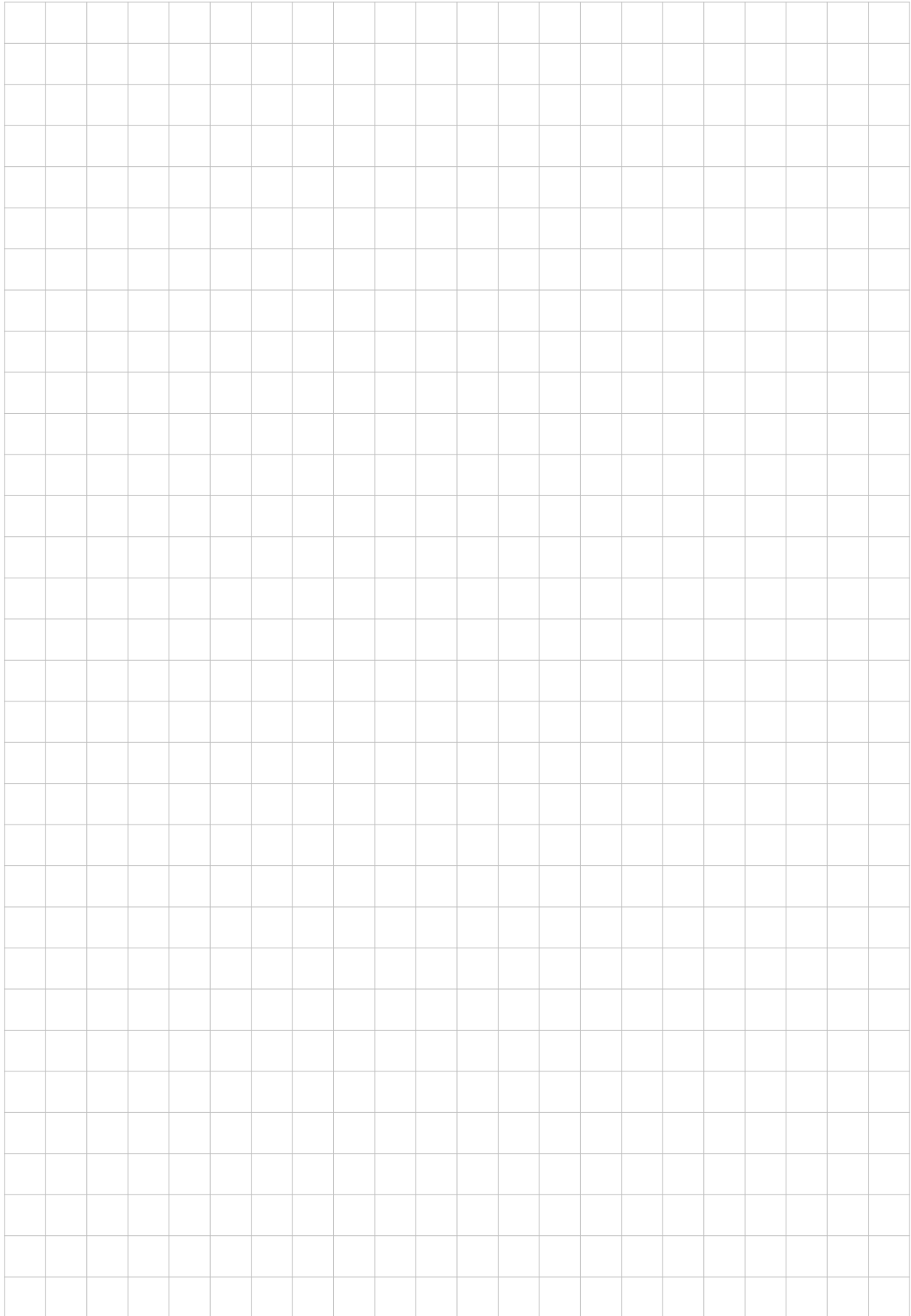
- de** Handbrausehalter verdreht sich.
- en** Hand shower support twists
- fr** support de dochette à main torsade
- nl** handdochehouder draait



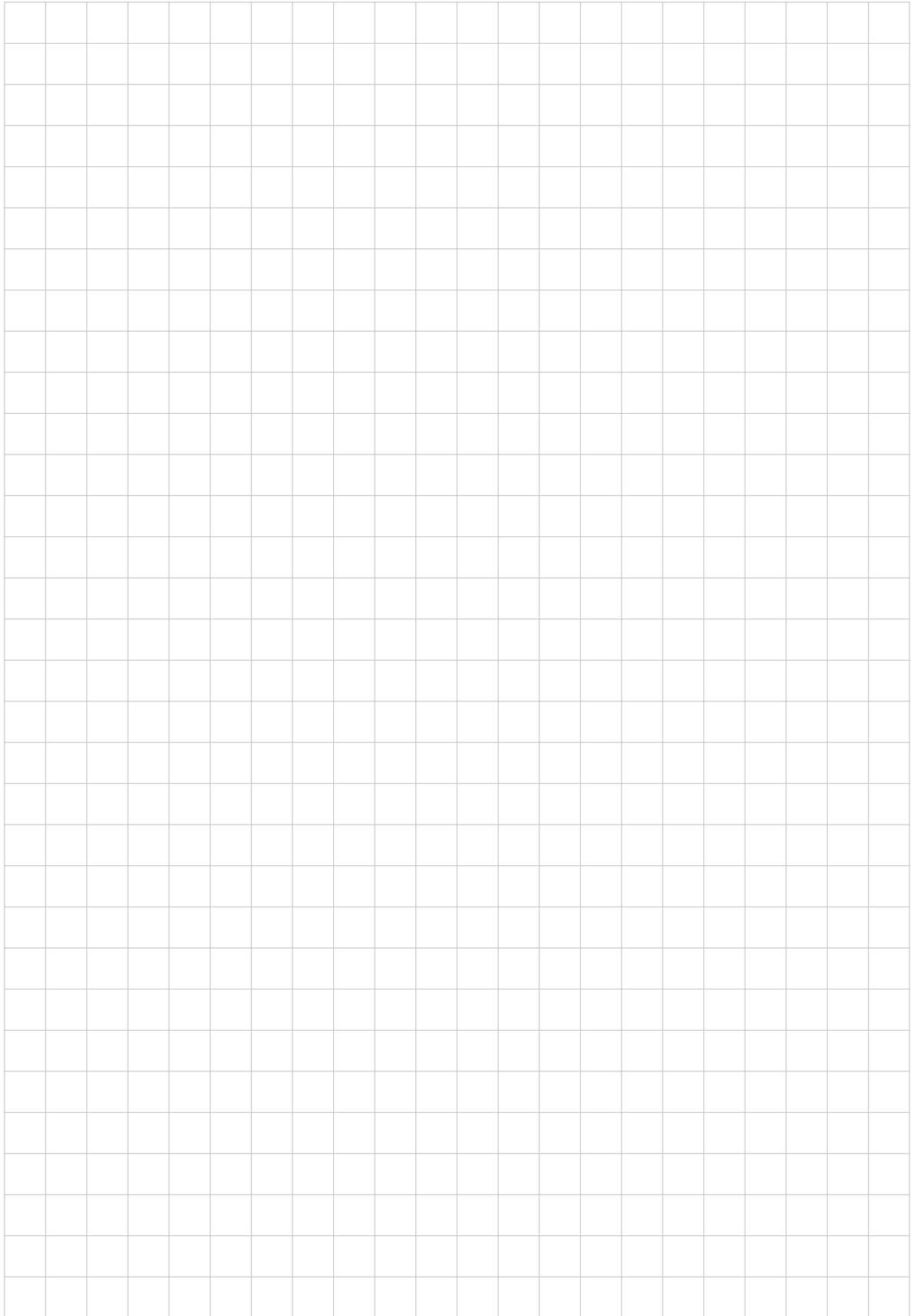
Notizen, notes, notities



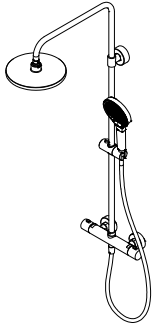
Notizen, notes, notities



Notizen, notes, notities



6455-6



Technische Hilfe / technical help / l'aide technique / technologische ondersteuning
Ersatzteilbestellung / spare parts order
commande de pièces détachées / Bestelling van onderdelen:
Telefon 02631 / 8607-0



E-Mail: info@duschkabine.com



Dusch-Info
August-Horch-Straße 1
56566 Neuwied
Deutschland / Germany / Allemagne / Duitsland

